

上证 开盘 2838.86 涨跌 +105.60 收盘 2920.55 成交额 1080.92 亿

Table of stock market data for Shanghai (沪市) including columns for code, name, price, volume, and analysis.



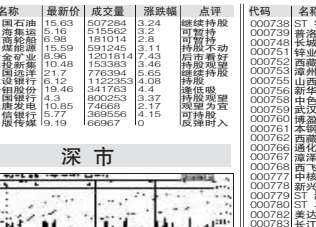
深证 开盘 10033.27 涨跌 +405.10 收盘 10335.37 成交额 524.72 亿

Table of stock market data for Shenzhen (深市) including columns for code, name, price, volume, and analysis.



上证 开盘 2838.86 涨跌 +105.60 收盘 2920.55 成交额 1080.92 亿

Table of stock market data for Shanghai (沪市) including columns for code, name, price, volume, and analysis.



深证 开盘 10033.27 涨跌 +405.10 收盘 10335.37 成交额 524.72 亿

Table of stock market data for Shenzhen (深市) including columns for code, name, price, volume, and analysis.



上证 开盘 2838.86 涨跌 +105.60 收盘 2920.55 成交额 1080.92 亿

Table of stock market data for Shanghai (沪市) including columns for code, name, price, volume, and analysis.



深证 开盘 10033.27 涨跌 +405.10 收盘 10335.37 成交额 524.72 亿

Table of stock market data for Shenzhen (深市) including columns for code, name, price, volume, and analysis.

封闭式基金

Table of closed-end fund data including columns for code, name, price, volume, and analysis.